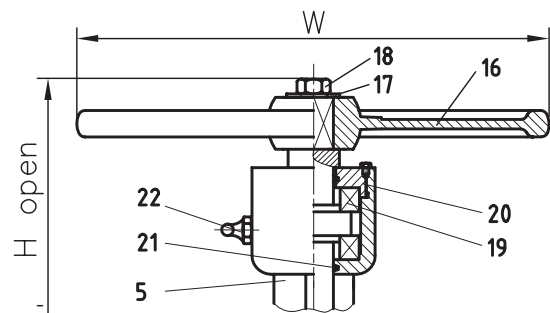


DIN GATE VALVE

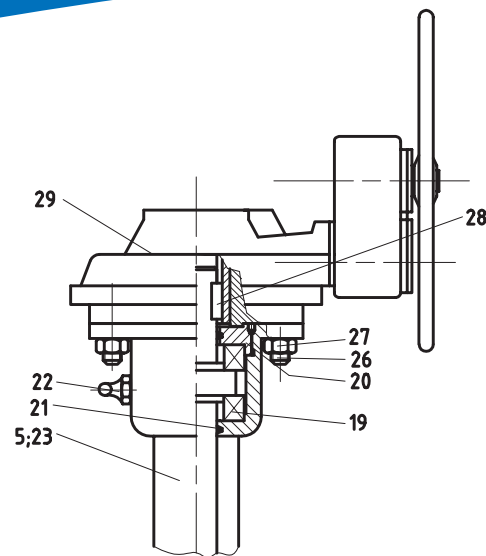
with non rising stem



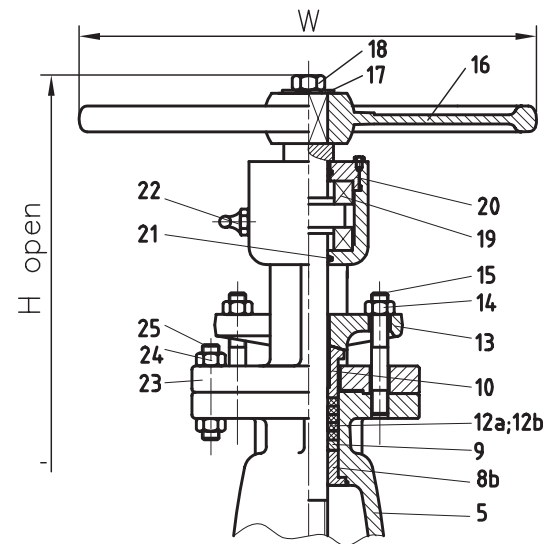
The Science Of Detail



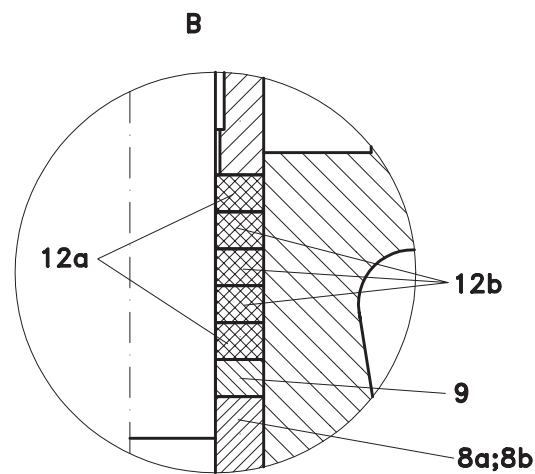
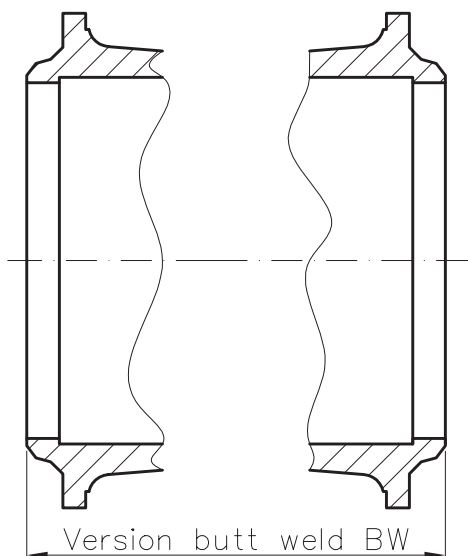
DN 150 ÷ 300 PN 64



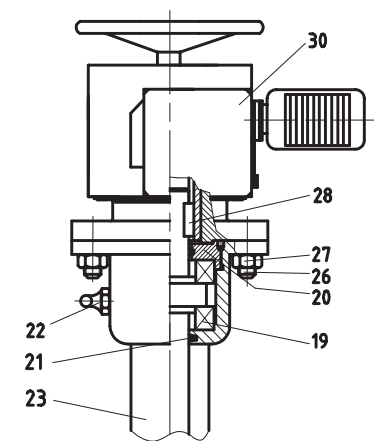
VALVE WITH MANUAL OPERATOR



DN 300 ÷ 800 PN 16 ÷ PN 64
Version with yoke



Version from execution standard



VALVE WITH ELECTRIC ACTUATOR

4. MATERIALS

No.	Name of Part		DIN SPECIFICATION		
			Standard	Low Temperature Service	
				-30°C 350°C	-40°C 345°C
1	Body		GP 240 GH	G 20 Mo 5	G 18 Mo 5
2	Gate	Forged	X 10 Cr Ni Ti 18.9	X 10 Cr Ni Ti 18.9	X 10 Cr Ni Ti 18.9
		Casting	G 20 Mo 5	G 18 Mo 5	G 18 Mo 5
3	Disc Drive Nut		Cu Zn 39 Pb 2 zh / A439- D2C	Cu Zn 39 Pb 2 zh / A439- D2C	Cu Zn 39 Pb 2 zh / A439- D2C
4	Stem		X 10 Cr 13	X 10 Cr Ni Ti 18.9	X 10 Cr Ni Ti 18.9
5	Bonnet		GP 240 GH	G 20 Mo 5	G 18 Mo 5
6	Bonnet Nuts		Ck 45	24 Cr Mo 5	24 Cr Mo 5
7	Bonnet Studs		42 Cr Mo 4	42 Cr Mo 4	42 Cr Mo 4
8a	Bushing	Threaded	Ck 35	TT StE 36	15 Mo 3
8b		Welded	Ck 25	TT StE 36	15 Mo 3
9	Packing Washer		Ck 25	TT StE 36	15 Mo 3
10	Gland		Ck 25	TT StE 36	15 Mo 3

5. BASIC TRIM MATERIALS

No.	Name of Part	
11a	Bonnet Gasket	Plane gasket – graphite with metal filler class 150
11b		Spiral wound gasket – Stainless Steel with graphite filler
12a	Packing	Graphite with metal filler and corrosion inhibitor
12b		Graphite with corrosion inhibitor
13	Gland Flange	C 22.3 / ST 37 – 3N
14	Gland Nuts	Ck 45
15	Gland Bolts	42 Cr Mo 4
16	Handwheel	GP 240 GH
17	Plate	ST 37 – 3N
18	Cap Screw	Ck 45
19	Bearings	Commercial
20	Locknut	Carbon Steel
21	Ring	Viton
22	Lubricant Fitting	Commercial
23	Yoke	GP 240 GH
24	Yoke Nuts	Ck 45
25	Yoke Bolts	42 Cr Mo 4
26	Actuator Bolts	Commercial
27	Actuator Nuts	Commercial
28	Key	Ck 45
29	Manual Actuator	Commercial
30	Electric Motor Actuator	42 Cr Mo 4

TRIM Number	Nominal TRIM	Material Type	Seat Surface	Stem
			Hardness [HB]	
1	F6	13 Cr	250 min	200 min-275 max
			300 min	
2	304	18 Cr – 8 Ni	Manufacturer's Standard	
5	HF	Co – Cr A	350 min	200 min-275 max
5A		Ni – Cr		
8	F6 / HF	13 Cr	250 min	200 min-275 max
8A		Co – cr A	350 min	
		13 Cr	250 min	
10	316	18 Cr – 8 Ni – Mo	Manufacturer's Standard	
12	316 / HF	18 Cr – 8 Ni – Mo	Manufacturer's Standard	
		Co – Cr A	350 min	Manufacturer's Standard
12 A	316 / HF	18 cr – 8 Ni – Mo	Manufacturer's Standard	
		Ni - Cr	350 min	Manufacturer's Standard

GATE VALVE with non rising stem

ND		40	50	65	80	100	125	150	200	250	300	350	400	450	500	600	700	800
16	RF	240	250	270	280	300	325	350	400	450	500	550	600	650	400	800	900	1000
	BW	240	250	270	280	300	325	350	400	450	500	550	600	650	400	800	900	1000
	Ho	260	330	330	360	385	505	520	620	750	1000	1190	1360	1460	1585	1785	2100	2340
	W	178	229	229	254	254	3560	356	356	406	508	508	559	660	660	762	838	838
Weight	RF	16	27	32	42	52	72	103	147	215	323	461	623	708	921	1282	3168	3686
	BW	15	25	29	39	48	66	96	137	200	302	431	585	655	863	1210	3092	3586
ND		40	50	65	80	100	125	150	200	250	300	350	400	450	500	600	700	800
25	RF	240	250	270	280	300	325	350	400	450	500	550	600	650	400	800	900	1000
	BW	240	250	270	280	300	325	350	400	450	500	550	600	650	400	800	900	1000
	Ho	260	330	330	360	385	505	520	620	750	1000	1235	1360	1460	1585	1785	2100	2340
	W	178	229	229	254	254	356	356	356	406	508	508	559	660	660	762	838	838
Weight	RF	17	28	34	45	60	93	113	174	268	410	586	892	1218	1458	2123	3563	4479
	BW	16	26	32	41	55	87	104	158	244	380	541	833	1103	1372	2025	3434	4302
ND		40	50	65	80	100	125	150	200	250	300	350	400	450	500	600	700	800
40	RF	240	250	290	310	350	400	450	550	650	750	850	950	1050	1150	1350	1550	1750
	BW	240	250	290	310	350	400	450	550	650	750	850	950	1050	1150	1350	1550	1750
	Ho	260	330	360	380	385	505	520	620	750	1000	1250	1360	1650	1750	1800	3420	3520
	W	178	229	229	305	305	356	356	406	508	660	660	762	762	838	838	600	800
Weight	RF	19	30	36	47	68	105	123	201	322	499	712	1162	1729	1995	2964	3724	5272
	BW	17	28	33	43	62	96	112	181	289	451	648	1071	1477	1884	2865	3595	5095
ND		40	50	65	80	100	125	150	200	250	300	350	400	450	500	600	700	800
64	RF	240	250	290	310	350	400	450	550	650	750	850	950	1050	1150	1350	1550	1750
	BW	240	250	290	310	350	400	450	550	650	750	850	950	1050	1150	1350	1550	1750
	Ho	260	355	360	380	430	505	680	750	860	1000	1250	1650	1700	1750	1800	3420	3520
	W	229	229	229	305	305	356	406	508	660	660	660	838	838	838	838	600	800
Weight	RF	23	35	46	59	81	114	176	271	451	627	884	1278	2205	2441	4133	5510	7078
	BW	20	30	40	52	71	100	155	238	404	561	793	1160	1718	2275	3984	5316	6811

- USE:** Extraction, transportation and distribution systems in: water, steam, gas and oil industry.
- SERVICE CONDITIONS:**
 - Ambient temperature: from - 35° C to + 40° C
 - Service temperature: from -45° C to + 350° C
- TECHNICAL CHARACTERISTICS:**
 - Design standard: DIN 3352.
 - End-to-end dimensions:

NP 16 and NP 25	EN-558-1 15 series and DIN 3202
	part 1 row F5 for RF
	part 2 row F8 for BW
NP 40 + NP 64	EN-558-1 26 series and DIN 3202
	part 1 row F7 for RF
	part 2 row S9 for BW
 - Connection flanges:

General Standard:	DIN 2501 and DIN 2526;
	DIN 2512; DIN 2513
Flanges Standard:	DIN 2543 for: NP 16
	DIN 2544 for: NP 25
	DIN 2545 for: NP 40
	DIN 2546 for: NP 64
 - Weld ends: DIN 3239
 - Temperature pressure rating: DIN 2401.
 - Testing: DIN 3230 and ISO 5208.
 - Operation: manual - handwheel
 electrical - gear
 electrical - actuator



SC ARIO SA
 10 Industriei Street
 4400 - Bistrita, Romania
 phone: +40-263-234160
 fax: +40-263-234008
 e-mail: info@ario.ro
 www.ario.ro